

CERTIFICATE OF LOCATION OF GOVERNMENT CORNER

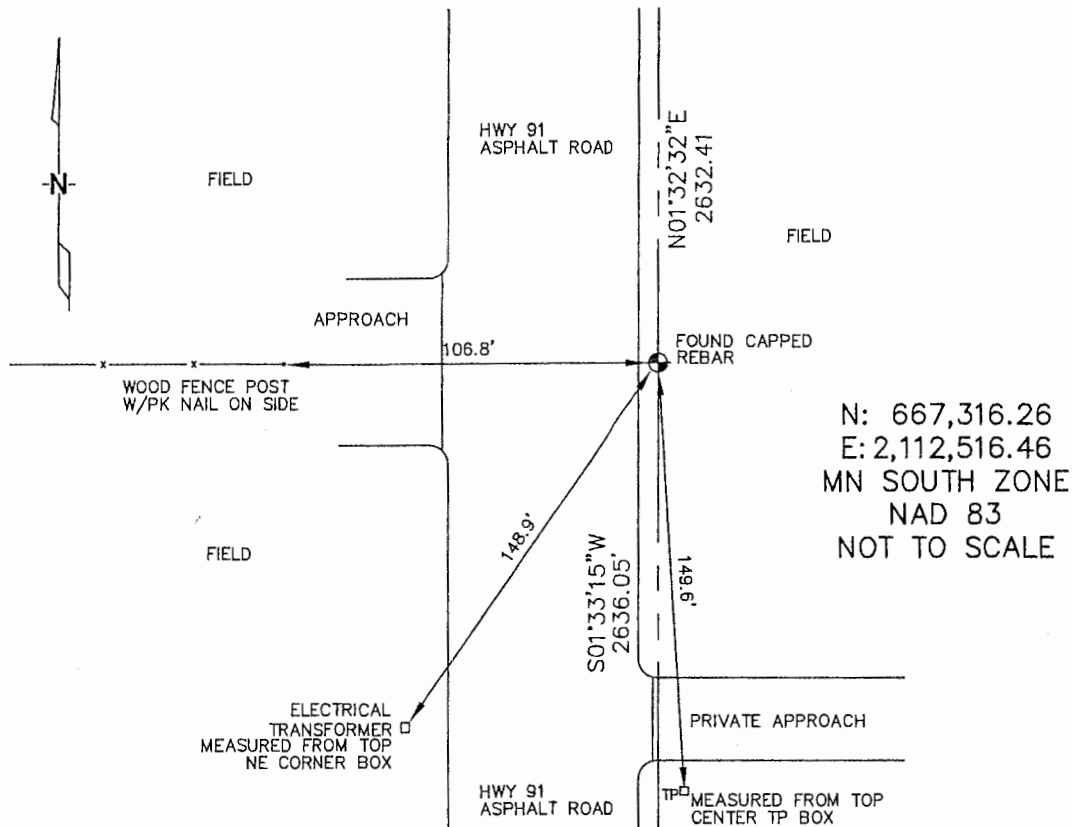
WEST 1/4 Corner of Section 7, Township 105, Range 42, 5TH P.M.

STATE OF MINNESOTA, County of MURRAY

At the corner location shown on the sketch :

- On 3/21/2006 found A REBAR WITH AN UNREADABLE CAP,
ON THE EAST SHOULDER OF THE ROAD, OPPOSITE FENCE RUNNING WESTERLY.
 left monument as found, lowered monument, removed monument (explain)
- On _____ set _____

Sketch of reference ties



Statement of evidence relative to this corner location is on back page

I hereby certify that this document and the data contained herein was prepared by me or under my direct supervision.

Thomas V. Ziff 6/29/06
 Signature Date

Registration No. 44563

- Land Surveyor, Professional Engineer
 County Surveyor, County Engineer

OFFICE OF THE COUNTY RECORDER

County of _____

SEP 28 2006

I hereby certify that this document was filed in the Co. Recorders office at _____ .M. on the day of _____ A.D. , 20

County Recorder James V. Johnson
 By _____, Deputy

DOCUMENT NO. _____

STATEMENT OF EVIDENCE:

WEST 1/4 CORNER, SECTION 7, T. 105 N., R. 42 W.,
MURRAY COUNTY, MINNESOTA

- 1861 J.W. Myers, US. Deputy Surveyor, monumented corner.
- ? Date MN DOT R/W Map for Trunk Highway 91, sheet 7/14, retracement calls for a 30" concrete monument in place; replacement certificate dated: 01/30/1953; at the intersection of N-S road and fence running westerly.
Ties: NE-63.92' to telephone pole;
SW-49.19' to disc in culvert;
NW-55.0' to disc in culvert;
W-73.38' to fence post.
- 10/05/1976 Murray Co., found a concrete monument and placed an iron pin above the monument.
Ties: SW-60.35' to nail & cap on a power pole;
SE-86.9' to a nail & cap on a power pole;
NW-58.18' to a nail & cap on a power pole.
- 5/27/1993 Murray Co., placed a PK nail in the asphalt, above the corner.
- 3/21/2006 Ulteig Engineers, Inc., Survey Crew, Brian Payne Party Chief found a rebar with an unreadable cap at the 1/4 corner.
Ties: S-149.6' to top, center of telephone pedestal;
SW-148.9' to NE corner of electrical transformer box;
W-106.8' to PK nail in wood, fence post;
N-2632.41' to NW corner, Section 7;
S-2636.05' to SW corner, Section 7.